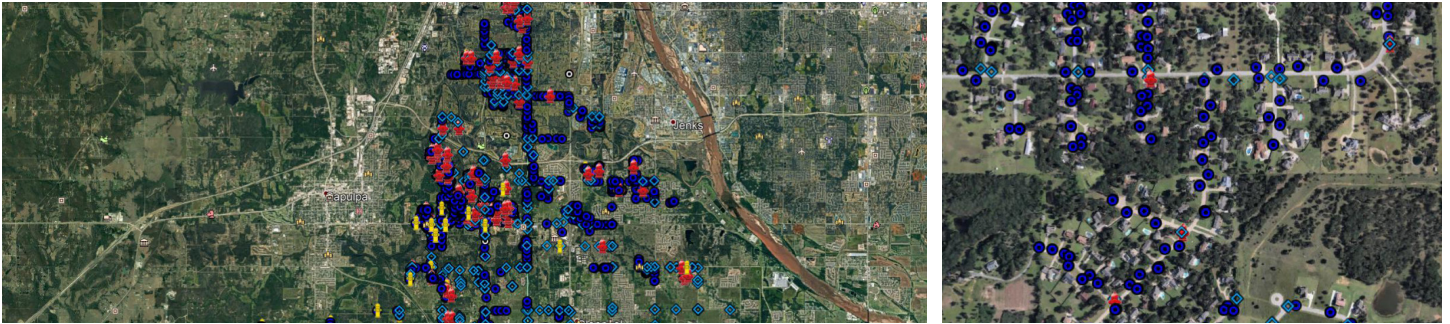


# District GIS Mapping Oklahoma City, Oklahoma



## Client:

Creek County Rural Water District  
No. 2  
2425 W. 121st Street South  
Sapulpa, OK 74066

## Client Contact:

Dorothy Greek  
District Manager  
Ph: 918.299.4448

## Project Team:

MaKyla Tipken  
Ryan Smith, P.E.

The Creek County Rural Water District No. 2 GIS mapping project included the collection of over 5536 features including water meter, valves, hydrants and various other water infrastructure. The data was compiled and outputted to KMZ files for utilization on District field personnel tablets. The mapping of their infrastructure allows the District to quickly and accurately locate meters and valves for maintenance and leak repair.